

Parts List

No.	Name of Parts	Per Set	Parts No.
1	Motor Case Assy.	1set	0458 0011 0099
*	(a) Motor Case (A)	1	0460 0011 0001
*	(b) Motor Case (B)	1	0460 0011 0002
	(c) Motor Case (C)	1	0460 0011 0003
	(d) Slide Cover	1	0460 0035 0000
	(e) Plate (A)	1	0460 1303 0001
	(f) Tapping Screw(M3×16)	7	9540 1018 0000
	(g) Motor Assy.	1set	0458 0330 0099
	(h) FanProtector	1	0460 0363 0000
	(i) Fan D03X-05TM11(CX)	1	0446 1556 0000
	(j) Rubber Packing	1	0446 0359 0000
	(k) Cross Recessed Screw (M3×16)	2	9410 2056 0000
	(l) Power Circuit Board Assy.	1set	0446 0195 0299
	(m) Head Screw	3	9410 4002 0000
	(n) Harness (A)	1	0460 0208 0001
	(o) Controll Circuit Board Assy.	1set	0458 1608 0099
	(p) O-Ring S6	2	9010 4026 0000
	(q) Harness (B)	1	0460 0208 0002
	(r) Connector Board	1	0460 1624 0000
	(s) Display Board	1	0460 1625 0000
	(t) Lamp Holder	1	0460 0959 0000
	(u) Throttle Knob Assy.	1set	0446 0153 0199
	(v) Spring (7.5×26)	1	8020 1449 0000
	(w) Spring (3.5×23)	1	8020 1450 0000
	(x) Reverse Lever Assy.	1set	0446 0007 0099
	(y) Reverse Lever Spring	1	0446 1615 0000
	(z) Tapping Screw (M2.6×5)	1	9540 1019 0000
	(A) Binding Band (CV-70N)	4	9790 1008 0000
	(B) Tapping Screw (M3×8)	2	9540 1021 0000
2	Liner Case Assy.	1set	0454 0422 0099
	(a) Liner Case	1	0444 0422 0000
	(b) O-Ring (1.78×29.87×33.43)	1	9011 2003 0000
	(c) Liner Cap	1	0186 0423 0000
	(d) Liner Upper Plate	1	0186 0424 0000
	(e) O-Ring (1.78×26.7×30.26)	1	9011 6064 0000
	Liner Assy.	1set	0444 0425 0099
	(f) Liner	1	※ ↑
	(g) Pin 2×3.5	2	8052 1028 0000
	(h) Pin 2×4.8	2	8052 1041 0000
	(i) Relief Valve	1	0444 0245 0000
	(j) Pin 1.5×4	1	8051 1314 0000
	(k) Main Shaft	1	0454 0614 0001
	(l) Blade	2	0371 0719 0000
	(m) Spring 3.1×20	2	8020 1296 0000
	Liner Lower Plate Assy.	1set	0186 0426 0099
	(n) Liner Lower Plate	1	※ ↑
	(o) Pin 3×5	1	8052 1031 0000
	(p) Adjust Bolt	1	0444 0522 0000
	(q) O-Ring (N2)	1	9010 4001 0000
	(r) Back-up Ring (N2)	1	9090 2001 0000
No.	Name of Parts	Per Set	Parts No.
	(s) Nylon Bushing	1	0181 0431 0000
	(t) Oil Plug	2	0181 0010 0000
	(u) O-Ring (N2)	2	9010 4001 0000
	(v) O-Ring (P12)	1	9011 7001 0000
	(w) Back-up Ring (12×16×0.8)	1	9090 1010 0000
3*	Washer (12.5×18×0.3)	1	8041 5034 0000
4*	Washer (12.5×18×0.5)	1	8041 5011 0000
5*	Washer (12.5×18×1)	1	8041 5021 0000
6	Hammer Case Assy.	1set	0454 0401 0099
	(a) Hammer Case	1	0454 0401 0000
	(b) Main Shaft Bushing	1	0259 0612 0000
7	Hex. Socket Head Bolt (M4×14)	4	8070 3008 0000
8	Spring Washer (M4)	4	9200 3012 0000
	Parts for YZ-T600A		
1A	Motor Case Assy.	1set	0458 0011 0098
2A	Liner Case Assy.	1set	0454 0422 0098
	(k) Main Shaft	1	0454 0614 0051
12	Bit Chuck Assy.	1set	2057 0414 0099
	(a) Bit Chuck	1	2057 0414 0000
	(b) Ball (1/8)	1	9150 3009 0000
	(c) Spring (13.5×10)	1	8020 1340 0000
	(d) Spring Washer	1	2331 0419 0000
	(e) Retaining Ring(10×1)	1	8030 1009 0000
	Standard Accessories		
	TF Pin (2×90)	1	8051 6001 0000
9	Protector	1	0458 0029 0000
10	Battery Pack (BPL-1820)	1	0446 1521 0000
	Optional Accessories		
11	Protector (for BPL-1820)	1	0446 0029 0001
10	Battery Pack (BPL-1820)	1	0446 1521 0000
	Battery Charger (BC0075G)	1	0446 1606 0000
	Power Cord 1.5M (Domestic)	1	8521 0008 0000
	Power Cord 2.0M (R. Pin for Europe)	1	8521 0009 0000
	Power Cord 1.5M<VM0718-VM0719>(for China)	1	8521 0029 0000
	Power Cord 1.5M<VM0228A-VM0296>(for US)	1	8521 0032 0000
	Power Cord 1.5M<VM0773-VM0776>(for India)	1	8521 0033 0000
	Hanger (A)	1	0446 0017 0001
	Hanger Crip (A)	1	0446 1801 0001

*Please replace the Motor Case(A) and the Motor Case(B) as a unit. Also please describe our model name when you order.

The part "※" can not be supplied individually. So please order it as a unit of assembly shown by arrow mark(↑).

★Marked parts may not be used, in some case.

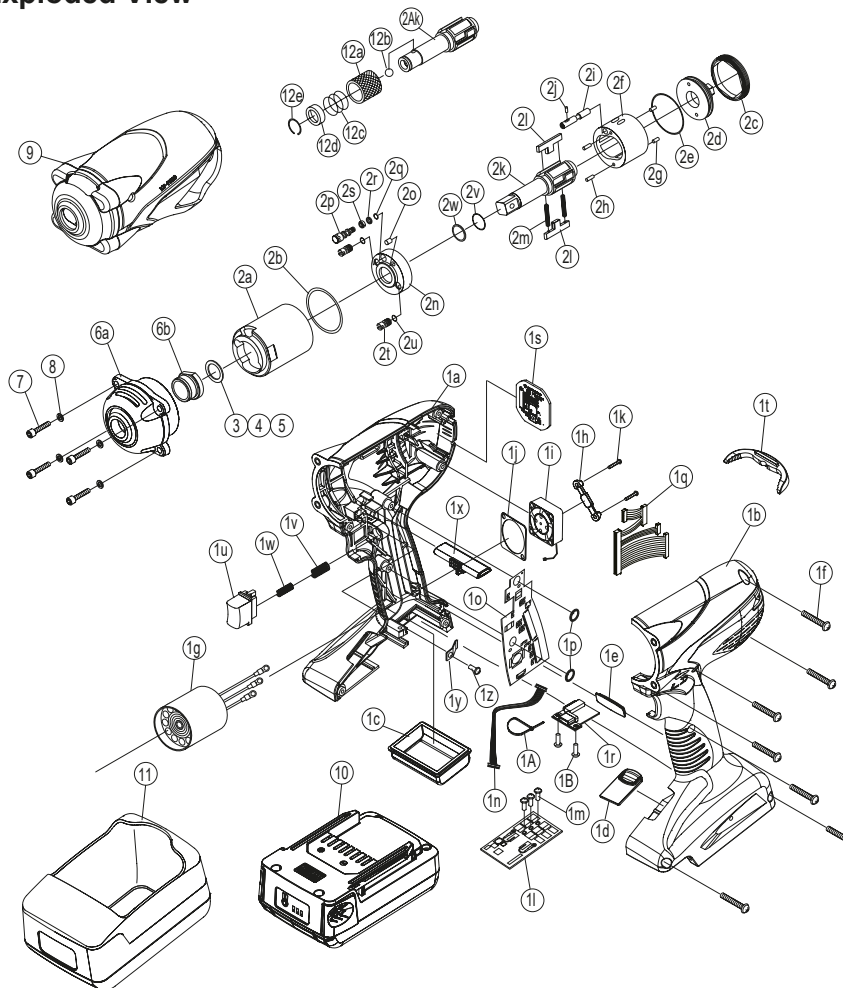
045800-1911

YOKOTA

Battery Shut-off Wrenches

MODEL (YES.No.)	TOOL No.
YZ-T600 (00)	0458 0000 0000
YZ-T600A (00)	0458 0000 0001

Exploded View



YOKOTA INDUSTRIAL CO.,LTD.